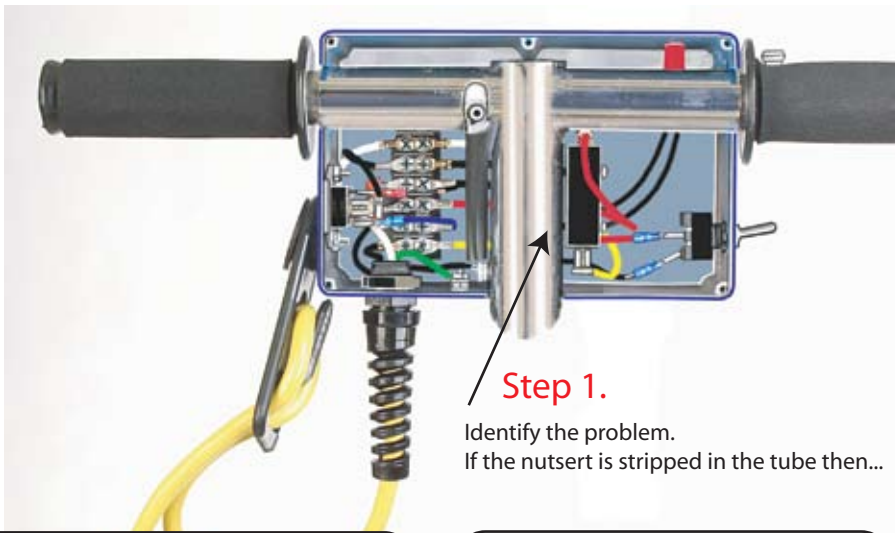


Repairing switch holding nut (Rabbit-3,-6, Woodpecker, Stonechat)

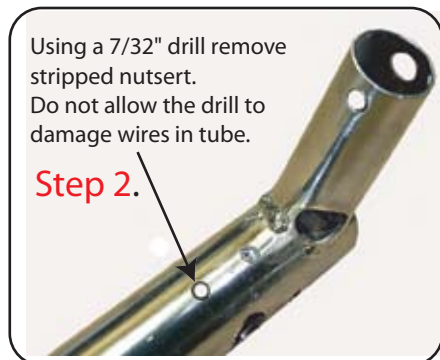
If you are experiencing switch related problems the following three possibilities can happen:

1. Malfunctioning switch
2. Broken switch activating lever
3. Stripped nutsert which hold switch in position.

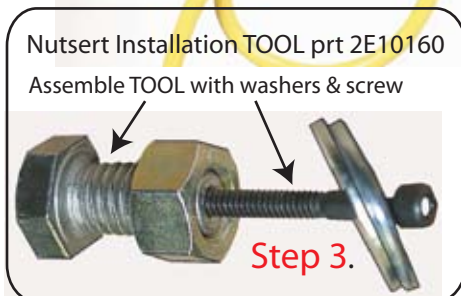
Reference picture



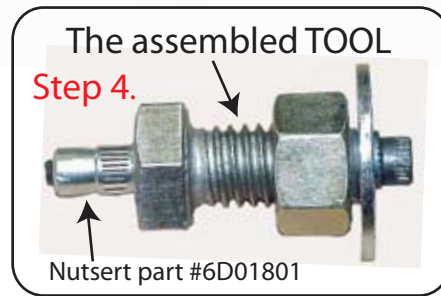
Step 1.
 Identify the problem.
 If the nutsert is stripped in the tube then...



Step 2.

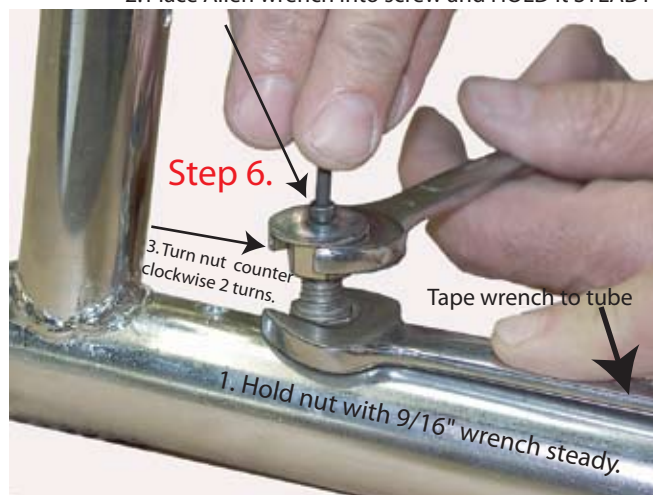


Step 3.

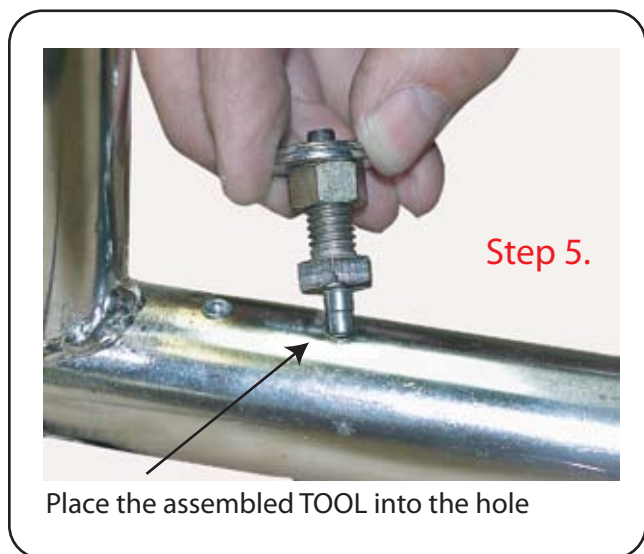


Step 4.

2. Place Allen wrench into screw and HOLD it STEADY



Step 6.



Place the assembled TOOL into the hole

1. To keep the nut steady, either tape a 9/16" spanner to the tube or ask someone to assist you to hold the spanner.
2. Place Allen wrench into screw to keep it steady.
3. Using a second 9/16 spanner, turn top nut counter clockwise two full turns.
4. Remove spanners, allen key and cap screw the job is done.
5. The nutsert is secured in the handle tube.
6. Re-install all components (switch etc...)